

Gamblin

Assembling your new rack *You will need a Phillips screwdriver



1. Take the two black sides and find the indicators LEFT UP and RIGHT UP.



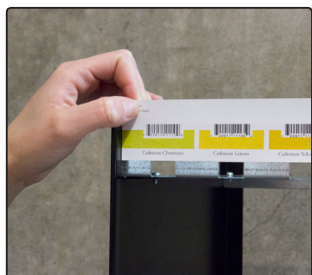
2. Prop the sides (or have someone hold them) up with LEFT UP and RIGHT UP closest to you.



3. Place bottom shelf on side rungs with face toward you pointing upwards. Align holes. Screw shelf to both sides.



4. Repeat step 3 working from the bottom to the top.



5. Peel "Rack one, shelf one" rackstrip and line it up with the top shelf cap holes.



6. Fold strip over and smooth across.



7. Repeat with remaining rackstrips working your way to the bottom shelf. This completes assembly for one rack.



8. Now that you're a pro, the next rack should go much faster!

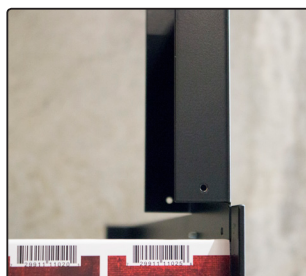
Attaching your header



1. Find header brackets.



2. Place bracket INSIDE rack side and screw from OUTSIDE.



3. Attach second bracket to the other side in the same way.



4. Affix Velcro (provided in the sleeve with the header) to face of both brackets.



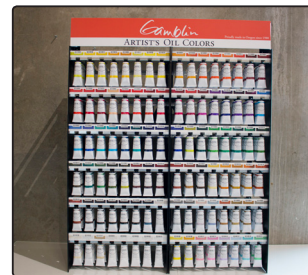
5. Peel...



6. Attach header.



7. Fill it up.



Ta-da!

Questions? retailersupport@gamblincolors.com